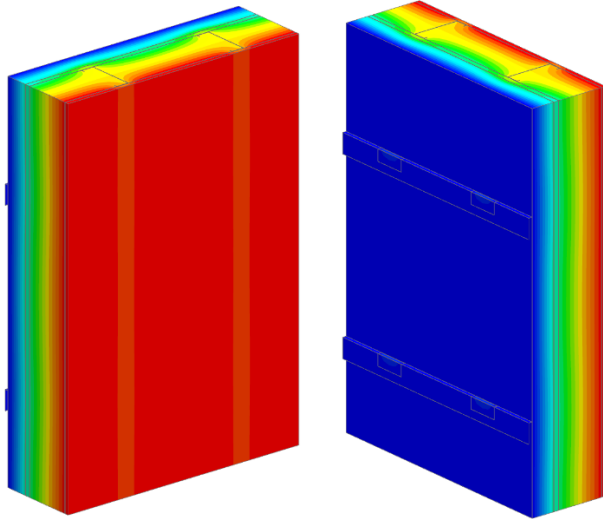


# Detail 5.1.97

## Exterior and Interior Insulated 6" x 1 5/8" Steel Stud (16" o.c.) Wall Assembly with Galvanized Horizontal Intermittent Clips (24" o.c.) Supporting Metal Cladding and Owens Corning R-22.5 Batt Insulation in Stud Cavity – Clear Wall



View from Interior

View from Exterior

### Thermal Performance Indicators

Assembly 1D (Nominal) R-Value	$R_{1D}$	R-24.9 (4.38 RSI) + exterior insulation
Transmittance / Resistance without Anomaly	$U_o$ , $R_o$	"clear wall" U- and R-value

<sup>1</sup>Assumptions and limitations for surface temperatures identified in ASHRAE 1365-RP

### Nominal (1D) vs. Assembly Performance Indicators

Exterior Insulation 1D R-Value (RSI)	$R_{1D}$ ft <sup>2</sup> ·hr·°F / Btu (m <sup>2</sup> K / W)	$R_o$ ft <sup>2</sup> ·hr·°F / Btu (m <sup>2</sup> K / W)	$U_o$ Btu/ft <sup>2</sup> ·hr ·°F (W/m <sup>2</sup> K)
R-6.3 (1.11)	R-31.2 (5.49)	R-17.8 (3.13)	0.056 (0.32)
R-8.4 (1.48)	R-33.3 (5.86)	R-19.3 (3.40)	0.052 (0.29)
R-12.6 (2.22)	R-37.5 (6.60)	R-22.2 (3.91)	0.045 (0.26)
R-16.8 (2.96)	R-41.7 (7.34)	R-24.9 (4.38)	0.040 (0.23)
R-21.0 (3.70)	R-45.9 (8.08)	R-27.4 (4.83)	0.036 (0.21)