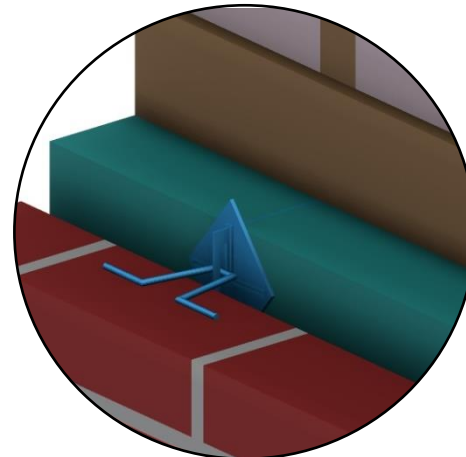
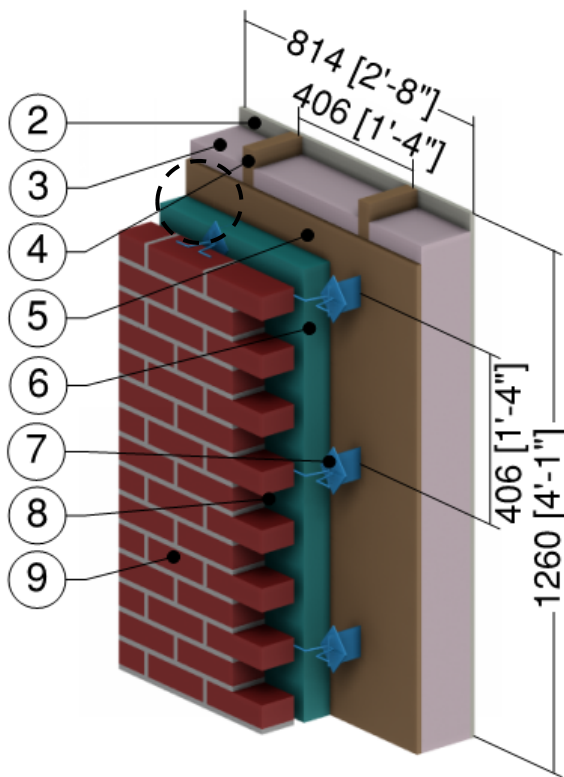


Detail 8.1.19 Exterior and Interior Insulated 2x6 Wood Stud (16" o.c.) Wall Assembly with Brick Ties Supporting Brick Veneer and R-19 Batt Insulation in Stud Cavity – Clear Wall



Brick Tie Detail

ID	Component	Thickness Inches (mm)	Conductivity Btu-in / ft ² ·hr·°F (W/m K)	Nominal Resistance hr·ft ² ·°F/Btu (m ² K/W)	Density lb/ft ³ (kg/m ³)	Specific Heat Btu/lb·°F (J/kg K)
1	Interior Film ¹	-	-	R-0.7 (0.12 RSI)	-	-
2	Gypsum Board	1/2" (13)	1.1 (0.16)	R-0.5 (0.08 RSI)	50 (800)	0.26 (1090)
3	Fiberglass Batt Insulation in Stud Cavity	5 1/2" (140)	0.29 (0.042)	R-19 (3.3 RSI)	0.9 (14)	0.17 (710)
4	2x6 Wood Stud (16" o.c.)	5 1/2" (140)	0.69 (0.10)	-	31 (500)	0.45 (1880)
5	Exterior Plywood Sheathing	1/2" (13)	0.69 (0.10)	R-0.7 (0.13 RSI)	31 (500)	0.45 (1880)
6	Exterior Insulation	Varies	-	R-0 to R-15 (0.00 RSI to 2.64 RSI)	1.8 (28)	0.29 (1220)
7	Brick Ties	14 gauge	347 (50)	-	489 (7830)	0.12 (500)
8	Air Cavity	1" (25)	-	R-0.9 (0.16 RSI)	0.075 (1.2)	0.24 (1000)
9	Brick Veneer	3 5/8" (92)	5.4 (0.78)	-	140 (2250)	0.20 (850)
10	Exterior Film ¹	-	-	R-0.2 (0.03 RSI)	-	-

¹ Value selected from table 1, p. 26.1 of 2009 ASHRAE Handbook – Fundamentals depending on surface orientation