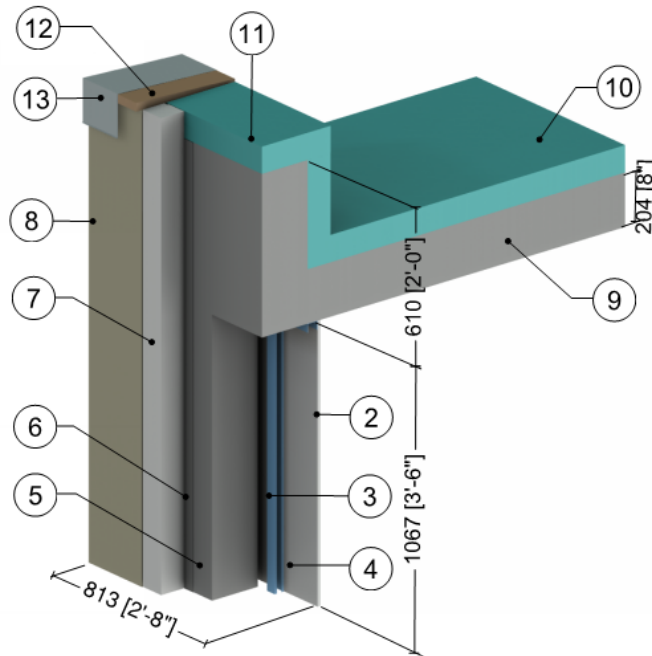


Detail 7.5.2

Exterior Insulated Concrete Drained EIFS Wall Assembly – Insulated Concrete Parapet & Slab Intersection



ID	Component	Thickness Inches (mm)	Conductivity Btu-in / ft ² ·hr·°F (W/m K)	Nominal Resistance hr·ft ² ·°F/Btu (m ² K/W)	Density lb/ft ³ (kg/m ³)	Specific Heat Btu/lb·°F (J/kg K)
1	Interior Films ¹	-	-	R-0.6 to R-0.7 (0.11 RSI to 0.12 RSI)	-	-
2	Gypsum Board	1/2" (13)	1.1 (0.16)	R-0.5 (0.08 RSI)	50 (800)	0.26 (1090)
3	1 5/8" x 1 5/8" Steel Studs (16"o.c.) with Top Tracks	18 Gauge	430 (62)	-	489 (7830)	0.12 (500)
4	Air in Stud Cavity	1 5/8" (41)	-	R-0.9 (0.16 RSI)	0.075 (1.2)	0.24 (1000)
5	Concrete	8" (203)	12.5 (1.8)	-	140 (2250)	0.20 (850)
6	Weather Resistive Barrier with Adhesive	-	-	-	-	-
7	Insulation Board	4" (100)	0.27 (0.039)	R-15 (2.64 RSI)	1 (16)	0.35 (1470)
8	Lamina	1/8" (4)	6 (0.9)	R-0.04 (0.01 RSI)	120 (1922)	0.20 (850)
9	Concrete Slab & Parapet	8" (203)	12.5 (1.8)	-	140 (2250)	0.20 (850)
10	Roof Insulation	4" (100)	-	R-20 (3.5 RSI)	1.8 (28)	0.29 (1220)
11	Parapet Insulation	Varies	-	R-10 to R-20 (1.76 RSI to 3.52 RSI)	1.8 (28)	0.29 (1220)
12	Wood Blocking	5/8" (16)	0.63 (0.09)	-	27.8 (445)	0.45 (1880)
13	Flashing & roof finish material are incorporated into exterior heat transfer coefficient					
14	Exterior Film ¹	-	-	R-0.2 to R-0.7 (0.03 RSI to 0.12 RSI)	-	-

¹ Value selected from table 1, p. 26.1 of 2009 ASHRAE Handbook – Fundamentals depending on surface orientation