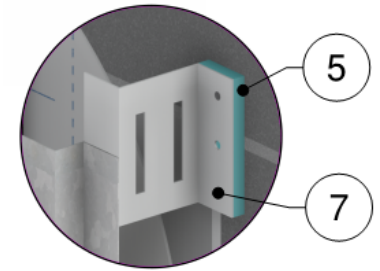
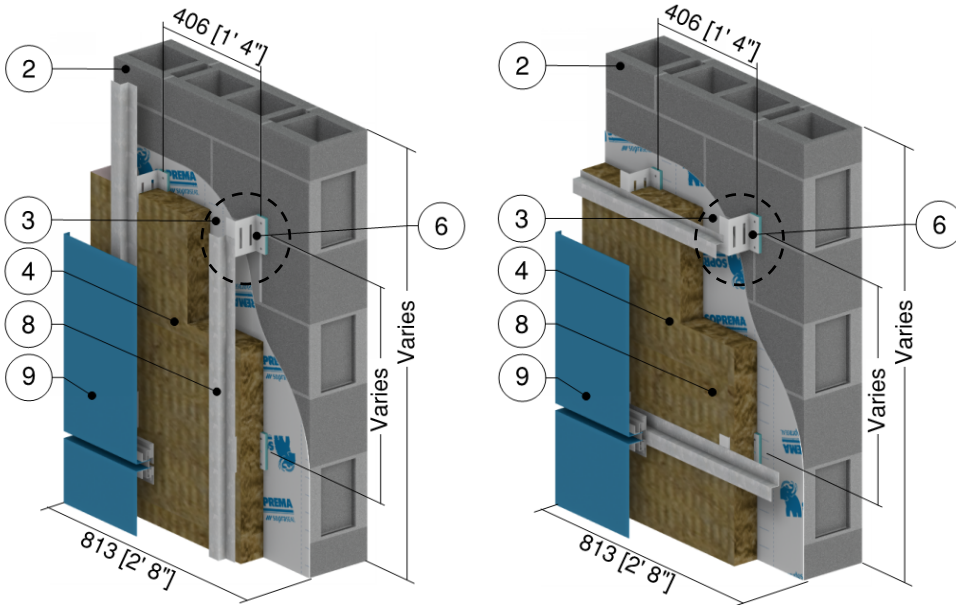
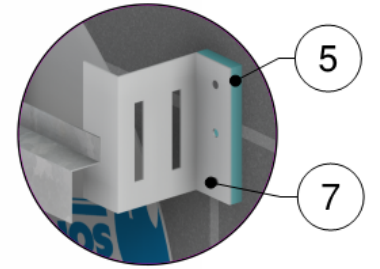


Detail 7.1.23

Exterior Insulated Concrete Block Wall Assembly with Mineral Wool and ACS-S Thermal Clip (16" o.c. Horizontal) Supporting Metal Cladding - Clear Wall



Vertical Girt: ACS Clip Detail



Horizontal Girt: ACS Clip Detail

ID	Component	Thickness Inches (mm)	Conductivity Btu-in / ft ² -hr-°F (W/m K)	Nominal Resistance hr-ft ² -°F/Btu (m ² K/W)	Density lb/ft ³ (kg/m ³)	Specific Heat Btu/lb-°F (J/kg K)
1	Interior Film ¹	-	-	R-0.7 (0.12 RSI)	-	-
2	Standard Concrete Blocks	8" (203)	10.4 (1.50)	-	119 (1900)	0.19 (800)
3	SOPREMA SOPRASEAL STICK 1100T membrane installed with SOPRASEAL STICK PRIMER	-	-	-	-	-
4	Exterior Mineral Wool Insulation	Varies	0.23 (0.034)	R-12.9 to R-34.4 (2.27 RSI to 6.06 RSI)	1.8 (28)	0.29 (1220)
5	Thermal Break	1/2" (13)	0.13 (0.019)	-	2.1 (33)	0.50 (2100)
6	ACS-S Thermal Clip	16 Gauge	118 (17)	-	500 (8000)	0.13 (530)
7	Fastener	1/4" (6.4) Ø	347 (50)	-	489 (7830)	0.12 (500)
8	Girt	18 Gauge	430 (62)	-	489 (7830)	0.12 (500)
9	Cladding with 1/2" vented airspace incorporated into exterior heat transfer coefficient					
10	Exterior Film ¹	-	-	R-0.7 (0.12 RSI)	-	-

¹ Value selected from table 1, p. 26.1 of 2009 ASHRAE Handbook – Fundamentals depending on surface orientation